

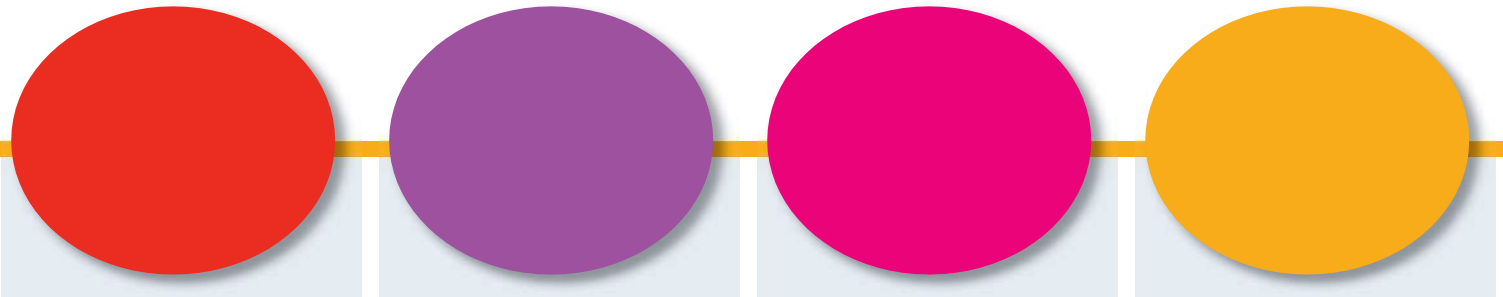


**Growing Up
in Ireland**
National Longitudinal
Study of Children

Growing Up in Ireland

12th Annual Research Conference

Programme 2020



Thursday 22nd October 2020

Online Webinar via Zoom

**The webinar 'Yellow Room' will open for admittance from
8:45am Irish Time (UTC + 1hr)**

Yellow Room	
09:00	Welcome and opening remarks– Professor Alan Barrett, ESRI
09:10	Opening Address by Minister Roderic O’Gorman, T.D., Department of Children, Equality, Disability, Integration and Youth
09:25	Welcome from Prof. Dorothy Watson, <i>Growing Up in Ireland</i>

9:35 - 9:40 five minute room change



Morning Parallel Sessions

	Session A Health Yellow Room Chair: Dr. Anne Nolan, ESRI	Session B Family context Green Room Chair: Dr. Elizabeth Nixon, TCD	Session C Activities Blue Room Chair: Dr Clare Farrell, DCEDIY
9:40	Vinay Sharma	Ruth Sellers	Melissa Bohnert
	Changes in oral health related behaviours from early to middle childhood: Findings from the national longitudinal survey of children in Ireland	Examining a cascade model of Inter-parental conflict effects on outcomes for children in two longitudinal general population samples	Emerging digital generations? Impacts of child digital use on mental and socioemotional well-being across two cohorts in Ireland, 2007 – 2018
10:00	Eoin McNamara	Rebecca Oldroyd	Desmond O'Mahony
	The effect of the great recession on socioeconomic inequalities in childhood obesity: Findings from <i>Growing Up in Ireland</i>	Understanding the links between family structure transitions, stress, and children's educational ability: The role of parent-child relationship quality.	Parental mediation of the relationship between media consumption and indicators of child mental health from 3-9 years
10:20	Emmet Feerick	Rebecca McClintock	Frances McGinnity
	The role of ADHD symptomology and trait conscientiousness in weight gain during adolescence	The role of socio-economic disadvantage in access to supports for young people with disabilities in Ireland	Unequal from the start? Social inequality, gender, home learning activities and cognitive outcomes from early to middle childhood in Ireland
10:40	Wrap-up	Wrap-up	Wrap-up

10:45

Break 10:45 – 11:15

	Session D Emotional well-being Yellow Room Chair: Dr. Anna Visser, DCEDIY	Session E Parents Green Room Chair: Prof. Helen Russell, ESRI	Session F Education Blue Room Chair: Laura Watts, DES
11:15	Anne Nolan	Gretta Mohan	Agata Lynch
	Risk and protective factors for mental health and wellbeing during childhood and adolescence	The influence of caregiver's migration status on child's use of healthcare services	<i>Growing Up in Ireland</i> (GUI), girls, and physics: Statistical quest for the kind of girl that chooses physics at leaving certificate
11:35	Nerilee Ceatha	Delma Byrne	Ivan Privalko
	Young people's life satisfaction in relation to sexual orientation and gender identity	Lone parents and maternal access to education/training in Ireland and Scotland	Difficulties in the transition to second-level education: Comparing social background and gender gaps in Scotland and Ireland
11:55	Brigid Teevan	Kevin Denny	Georgiana Mihut
	Mother-child relationship: A potential resource for young people disclosing harmful sexual experiences	Maternal labour supply and child development	The effect of parental educational expectations on socio-emotional and academic outcomes among 17/18 year-olds with disabilities in Ireland
12:15	Wrap-up	Wrap-up	Wrap-up

12:20

Lunch 12:20 – 13:20

Afternoon Session

13.20

<p>Keynote Address</p> <p>Yellow Room</p> <p>Chair: Dermot Ryan, DCEDIY</p>		
<p>Professor Emla Fitzsimons, University College London</p> <p>Mental health among young people: Longitudinal evidence from the UK</p>		

14:30

Break 14:30 to 14:40

	<p>Session G</p> <p>Socio-economic context</p> <p>Yellow Room</p> <p>Chair: Gillian Roche, CSO</p>	<p>Session H</p> <p>Well-being and context</p> <p>Green Room</p> <p>Chair: Prof. Trevor Spratt, TCD</p>	<p>Session I</p> <p>Early childhood development</p> <p>Blue Room</p> <p>Chair: Richard McMahon, CSO</p>
14:40	Emma J. Hurley	Emer Smyth	Lorna Barry
	Understanding the dynamics of factors influencing 17 year olds in Ireland coming into conflict with the law – a network analysis of the <i>Growing Up in Ireland data</i>	Socio-emotional wellbeing and school social mix	Prevalence of parent-reported conduct problems in 5-year-old children in Ireland
15:00	Helen Russell	Nicola Dalrymple	Inés Lawlor
	Dynamics of child poverty in Ireland	The association between adolescent and maternal depressive symptoms: Evidence from a population-based cohort	An investigation of the correlations between unstructured play and the cognitive, physical, social and mental health of children. A cross-sectional analysis of 5-year-olds in Ireland
15:20	Delma Byrne	Hannah Ross	Fiona Craven
	Disadvantage, poverty, and children’s measured cognitive trajectories: Evidence from the Infant cohort of the <i>Growing up in Ireland Study</i>	The role of secondary caregiver depression and attachment in developmental trajectories of externalising problems	An investigation of preschool language delay and reading skill at age 9 years in an Irish childhood cohort
15:40	Wrap up	Wrap up	Wrap up

15:45

Conference end