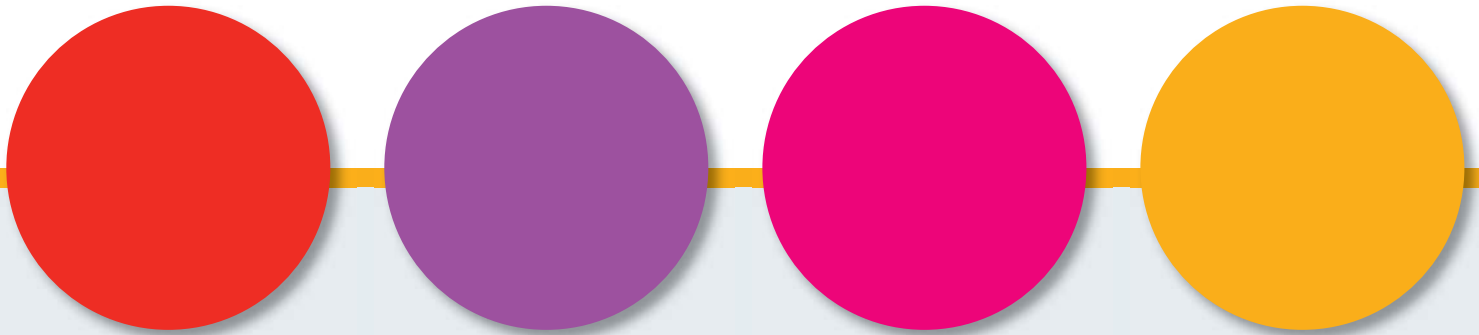




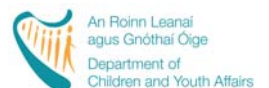
**Growing Up
in Ireland**
National Longitudinal
Study of Children

Growing Up in Ireland Research Conference 2011



Thursday 1st December 2011

D4 Berkeley Hotel



CONFERENCE PROGRAMME

8.00am Registration

MORNING SESSION

Chair: Professor Frances Ruane, Director, ESRI

9.00am Introduction and Welcome

9.10am Opening Address

Ms. Frances Fitzgerald T.D. Minister for Children and Youth Affairs

9.20am ***Growing Up in Ireland – The First Findings from the Infant Cohort at 3 Years***

Professor James Williams, Principal Investigator, ***Growing Up in Ireland***

	Session A. Grosvenor Suite 1	Session B. Grosvenor Suite 2	Session C. Herbert Suite
10.00am	<p><i>“Not too fat and not too thin”: A mixed methods analysis of the physical health and well-being of nine-year-olds</i></p> <p>Brían Merriman</p>	<p><i>Multigrade teaching: The influence on academic and social outcomes</i></p> <p>Amanda Quail and Emer Smyth</p>	<p><i>Growing up in a one-parent family: The relationship between family structure and child outcomes</i></p> <p>Carmel Hannan, Brendan Halpin and Carol Coleman</p>
10.30am	<p><i>Caregiver and child weight perception versus measured BMI: Who under-estimates their weight?</i></p> <p>Mark Ward and Evelyn Mahon</p>	<p><i>The gender maths gap and single sex schooling</i></p> <p>Aedín Doris, Donal O’Neill and Olive Sweetman</p>	<p><i>Partnership, parenthood and children in Ireland: Contextualising the analysis of GUI data</i></p> <p>Professor Tony Fahey</p>
11.00am	Tea/Coffee		
	Session D. Grosvenor Suite 1	Session E. Grosvenor Suite 2	Session F. Herbert Suite
11.20am	<p><i>Childhood obesity: Impacts of lifestyle, parental factors and ethnicity: A cross-sectional study in Ireland</i></p> <p>Vivienne Vanni-igbinomwanhia and Ela Polek</p>	<p><i>Child well-being in Ireland and Denmark: A comparative analysis of the data from the Growing Up in Ireland study and the Danish Longitudinal Survey of Children</i></p> <p>Patricia Keilthy</p>	<p><i>Births following fertility treatment within the Growing Up in Ireland Infant Cohort</i></p> <p>Aisling Murray</p>
11.50am	<p><i>Weight, body image and bullying in nine-year-olds</i></p> <p>Udo Reulbach, Emma Ladewig, Elizabeth Nixon, Mona O’Moore, James Williams, Tom O’Dowd</p>	<p><i>Developing an index of well-being for nine-year-old Irish children</i></p> <p>Carly Cheevers</p>	<p><i>Determinants of periconceptional folic acid supplementation in Ireland: findings from the Infant Cohort of Growing Up in Ireland</i></p> <p>Sinéad McNally, Ashling Bourke and Cathal McCrory</p>
12.20pm	<p><i>The impact of local food environment on the quality of children’s diet</i></p> <p>Richard Layte, Seán Lyons and John Cullinan</p>	<p><i>The well-being of migrant children in Ireland</i></p> <p>Philip Curry, Robbie Gilligan and Mark Ward</p>	<p><i>Is friendship associated with happiness amongst children with autism?</i></p> <p>Laura Mangan and Lorraine Swords</p>
12.50pm	Lunch		

● CONFERENCE PROGRAMME (CONTINUED)

AFTERNOON SESSION

Chair: Professor Mary McCarron, Dean of Faculty of Health Sciences, TCD

1.50pm	Keynote Address: Grosvenor Suite 1		
	The Early Years and Later Development: Evidence and Social Policy		
	Professor Edward Melhuish, Professor of Human Development at Birkbeck, University of London and Visiting Professorial Fellow at the Institute of Education, University of London.		
3.00pm	Tea/Coffee		
	Session G. Grosvenor Suite 1	Session H. Grosvenor Suite 2	Session I. Herbert Suite
3.20pm	<i>Well-being and the family system: A structural equation model of relational and contextual influences</i>	<i>Subjective child well-being in vulnerable families</i>	<i>Asthma, family structure and health utilisation in infants</i>
	Jonathan Pratschke, Trutz Haase and Kieran McKeown	Collette McAuley and Richard Layte	Dervla Kelly, Tom O'Dowd and Udo Reulbach
3.50pm	<i>Household and individual characteristics predicting violent conflict within couples in Ireland</i>	<i>Child poverty and its correlates among children</i>	<i>The association between breastfeeding and respiratory illness in nine-month-olds</i>
	Ela Polek	Christopher T. Whelan and James Williams	Emma Ladewig, Tom O'Dowd and Udo Reulbach
4.20pm	<i>Family settings and children's adjustment: Differential adjustment across families of nine-year-olds in Ireland</i>	<i>Contrasting approaches to the measurement of children's deprivation</i>	<i>Prenatal smoking and childhood behavioural problems: A quasi-experimental approach</i>
	Maeve Thornton and Elizabeth Nixon	Sheila Greene, Lorraine Swords and Dorothy Watson	Cathal McCrory and Richard Layte
5.00pm	Conclusion and Conference Close		
	Ms. Mary Doyle, Director General, Department Children and Youth Affairs		

● THE CONTEXT – ABOUT *GROWING UP IN IRELAND*

Growing Up in Ireland is the national longitudinal study of children. It is the most significant study of children ever to have taken place in this country and will help us to improve our understanding of all aspects of childhood and child development.

Taking place over seven years, the study is following the progress of two groups of children: a Child Cohort of 8,500 children interviewed at 9 and 13 years and an Infant Cohort of 11,100 children interviewed at 9 months and 3 years.

The main aim of the study is to paint a full picture of children in Ireland and how they are developing in the current social, economic and cultural environment. This information will be used to assist in policy formation and in the provision of services which will ensure that all children have the best possible start in life.

Growing Up in Ireland is a Government study. The Department of Children and Youth Affairs is funding it in association with the Department of Social Protection and the Central Statistics Office. The Department of Children and Youth Affairs is overseeing and managing the study, which is being carried out by a consortium of researchers led by the Economic and Social Research Institute (ESRI) and Trinity College Dublin.

● CONFERENCE AIMS

This is *Growing Up in Ireland's* third annual research conference and has been organised by the Study Team to launch a series of Key Findings from the recently completed Infant Cohort at 3 years as well as some of the first longitudinal findings from the study. The conference will also provide a platform for discussion on a broad range of research from both the Infant and Child Cohorts.

The Keynote Speaker is Professor Edward Melhuish, Professor of Human Development at Birkbeck, University of London and Visiting Professorial Fellow at the Institute of Education, University of London. Approximately 24 papers will be presented at the conference by researchers from a wide range of third level and research institutions. These will be based on data from *Growing Up in Ireland's* Child and Infant Cohorts and will focus on a range of topics including health, parenting and education.

● KEYNOTE SPEAKER

Professor Edward Melhuish

Professor Melhuish is an internationally recognised expert in the study of child development and childcare and has extensive experience with longitudinal studies. His research interests include child development, parenting, childcare and early education.

For several years Professor Melhuish has been a Principal Investigator on the *Effective Provision of Pre-school Education (EPPE)* and *Effective Pre-school Provision in Northern Ireland (EPPNI)* projects based in England and Northern Ireland, which are following 4,000 children from 3 to 7 years of age. These studies are investigating the effects of family, community and pre-school experiences (and their interaction) on child development.

Professor Melhuish is also Executive Director of the *National Evaluation of Sure Start* and his work undertaken to date has addressed many issues relevant to Sure Start including cognitive, language and behavioural development of young children and the role of family factors, home environment, childcare and pre-school experience upon children's development.

Professor Melhuish has written reports for government departments, policy makers, practitioners and academic researchers. He has over 150 scientific papers, chapters and books, some of which have been translated in up to eight languages.

● PRESENTERS

Ashling Bourke

PhD Candidate,
School of Psychology, TCD

Carly Cheevers

UCD Ad Astra Research Scholar,
School of Psychology, UCD

Carol Coleman

Department of Sociology,
University of Limerick

John Cullinan

Lecturer in Economics,
Department of Economics, NUI Galway

Philip Curry

Assistant Professor and Research
Fellow, School of Social Work and
Social Policy, TCD

Tony Fahey

Head of Social Policy,
School of Applied Social Science, UCD

Aedín Doris

Lecturer, Department of Economics,
Finance and Accounting,
NUI Maynooth

Sheila Greene

Fellow Emeritus,
School of Psychology, TCD

Robbie Gilligan

Professor of Social Work and Social
Policy, School of Social Work and
Social Policy, TCD

Brendan Halpin

Lecturer in Sociology, Department of
Sociology, University of Limerick

Carmel Hannan

Lecturer in Sociology, Department of
Sociology, University of Limerick

Trutz Haase

Social and Economic Research
Consultant

Patricia Keilthy

Research Assistant,
School of Applied Social Science, UCD

Dervla Kelly

Department of Public Health and
Primary Care, TCD

Emma Ladewig

Department of Public Health and
Primary Care, TCD

Richard Layte

Joint Coordinator of Health Research,
ESRI; Management Group, *Growing
Up in Ireland* Study Team

Seán Lyons

Associate Research Professor, ESRI

Laura Mangan

Formerly TCD

Evelyn Mahon

Senior Lecturer, School of Social Work
and Social Policy, TCD

Brían Merriman

Research Fellow,
Growing Up in Ireland

Aisling Murray

Research Fellow,
Growing Up in Ireland

Collette McAuley

Professor of Social Work,
School of Applied Social Science, UCD

Cathal McCrory

Research Fellow,
Growing Up in Ireland

Kieran McKeown

Social and Economic Research
Consultant

Sinéad McNally

Research Fellow,
Growing Up in Ireland

Elizabeth Nixon

Lecturer in Developmental
Psychology, TCD; Management Group,
Growing Up in Ireland Study Team

Mona O'Moore

Fellow Emeritus, School of Education,
TCD

Tom O'Dowd

Professor of General Practice, TCD;
Management Group, *Growing Up in
Ireland* Study Team

Donal O'Neill

Professor, Department of Economics,
Finance and Accounting,
NUI Maynooth

Ela Polek

Postdoctoral Research Fellow, UCD

Jonathan Pratschke

Research Fellow, Department of
Economics and Statistics,
University of Salerno, Italy

Amanda Quail

Research Fellow,
Growing Up in Ireland

Udo Reulbach

Research Fellow, Department of
Public Health and Primary Care, TCD

Emer Smyth

Programme Coordinator of Education
Research, ESRI; Management Group,
Growing Up in Ireland Study Team

Olive Sweetman

Lecturer, Department of Economics,
Finance and Accounting,
NUI Maynooth

Lorraine Swords

Lecturer in Child and Adolescent
Psychology, Coordinator of the
Structured PhD in Child and Youth
Research, TCD

Maeve Thornton

Research Fellow,
Growing Up in Ireland

Vivienne Vanni-igbinomwanhia

PhD Candidate, School of Public
Health, Physiotherapy and
Populations Science, UCD

Mark Ward

PhD candidate, School of Social Work
and Social Policy, TCD

Dorothy Watson

Associate Research Professor, ESRI

Christopher T. Whelan

Professor and Head of Sociology,
School of Sociology, UCD

James Williams

Research Professor, ESRI; Principal
Investigator, *Growing Up in Ireland*

