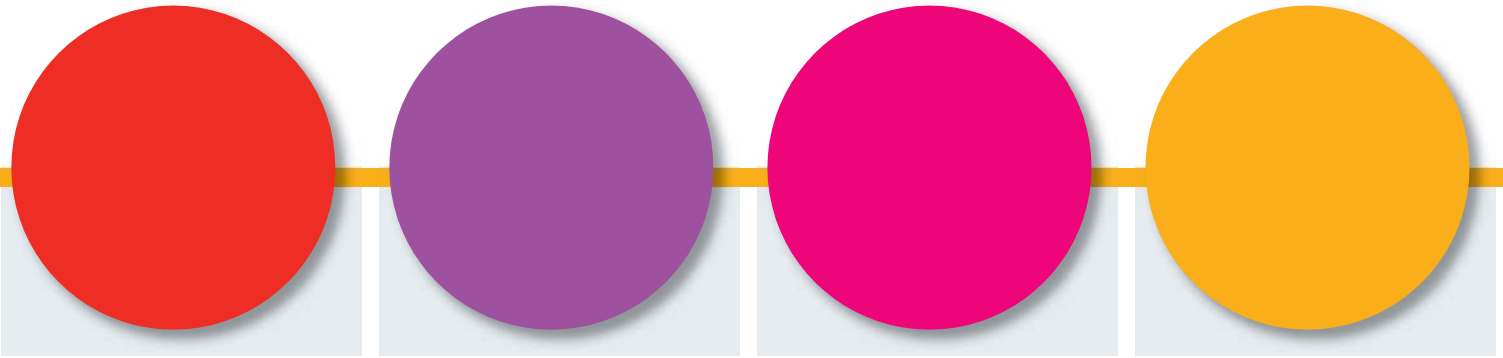




# ***Growing Up in Ireland***

## **Research Conference 2016**



**Thursday 3<sup>rd</sup> November 2016**  
**Croke Park Conference Centre, Dublin 3**



# CONFERENCE PROGRAMME

08:00 Registration

## MORNING SESSION

Hogan Mezzanine Theatre	
09:00	Welcome – Professor Alan Barrett, ESRI
09:10	<i>Growing Up in Ireland</i> – Dr Fergal Lynch, Secretary General, DCYA
09:20	Keynote Address – Professor Gordon Harold, University of Sussex Family Relationship Influences on Children's Mental Health: New Research, Emerging Themes, Future Opportunities

	Session A Davin Suite Chair: TBC	Session B Hogan Mezzanine Theatre Chair: Claire Finn	Session C Nally Suite Chair: Clare Farrell
10:25	<b>Maartje Schreurs</b> The utility of the food pyramid in guiding Irish 5-year-old children into a healthier diet: a <i>Growing Up in Ireland</i> study	<b>Anne Matthews</b> Mothers' perceptions of breastmilk sufficiency and duration of breastfeeding: secondary analysis of the <i>Growing Up in Ireland</i> infant cohort dataset	<b>Fran McGinnity</b> Socio-emotional outcomes at age 5 in Ireland: does non-parental childcare make a difference?
10:50	<b>Michael Crowe</b> Combining nutritional data from two surveys to augment dietary intake estimates	<b>Tyannah Reed</b> The impact of elective caesarean sections on digestive allergies, cardiac issues and respiratory issues in the children's <i>Growing Up in Ireland</i> cohort	<b>Aleksandra Gronostaj-Miara</b> Different ways of estimating ADHD prevalence rates and the implications for mental health service

11.15 Tea and Coffee

	Session D Davin Suite Chair: Celine Murrin	Session E Hogan Mezzanine Theatre Chair: Kasey Treadwell Shine	Session F Nally Suite Chair: Elizabeth Nixon
11:45	<b>Frances Shiely</b> The association between weight perception and BMI: report and measurement data from the <i>Growing Up in Ireland</i> cohort study of 9 year olds	<b>Dorothy Watson</b> Socio-economic variation in the impact of the Irish recession on the experience of economic stress among families	<b>Aoife Gallagher</b> The association between self-concept and disability among adolescents in Ireland: secondary analysis of the <i>Growing Up in Ireland</i> study
12:10	<b>Mimi Xiao</b> The relationship between obesity and educational performance in Ireland: a panel analysis using the <i>Growing Up in Ireland</i> survey	<b>Mark McGovern</b> The Great Recession, household income, and children's test scores	<b>Lisa Girard</b> Duration of breastfeeding and the longitudinal impact on adolescents' behaviour problems: the <i>Growing Up in Ireland</i> child cohort
12:35	<b>Gail Nicolson</b> Short sleep duration is associated with overweight and obesity in five-year-old children	<b>Samira Barbara Jabakhanji</b> Social class variation, the effect of the economic recession and childhood obesity at 3 years of age in Ireland	<b>Dearbhail Ni Cathain</b> The impact of early life stress on psychological symptoms in young adolescents

## AFTERNOON SESSION

13:00 Lunch

<b>Hogan Mezzanine Theatre</b> <b>Chair: Professor Alan Barrett, ESRI</b>	
14:15	<b>Launch of Key Findings from 17/18-year-old cohort by Minister Dr Katherine Zappone T.D., Minister for Children and Youth Affairs</b>
14:35	<b>Presentation on Key Findings – Professor James Williams, ESRI</b>

15:00 Tea and Coffee

	<b>Session G</b> <b>Davin Suite</b> <b>Chair: TBC</b>	<b>Session H</b> <b>Hogan Mezzanine Theatre</b> <b>Chair: Gavan O’Leary</b>	<b>Session I</b> <b>Nally Suite</b> <b>Chair: TBC</b>	
15:30	<b>Patrick Aidan Williams</b>	<b>Mira Dobutowitsch</b>	<b>Aisling Murray</b>	<b>15:30</b>
	Obesity and mental health – joining the dots	A day in the life of 9-year-olds: exploring patterns in time-use data	Ethical and practical considerations of interviewing with children	
15:55	<b>Aoife Fitzgerald</b>	<b>Slawa Rokicki</b>	<b>James Williams</b>	<b>15:50</b>
	The prevalence of overweight and obesity in Irish children with phenylketonuria compared with the <i>Growing Up in Ireland</i> study	Disparities in early life investments and children’s time use	Attriters and their impact on <i>Growing Up in Ireland</i>	
16:20	<b>Valentina Tonei</b>	<b>Emer Smyth</b>	<b>Richard Layte</b>	<b>16:10</b>
	The effect of public health insurance coverage on child health and healthcare utilisation	Space to act out? Neighbourhood and school influences on behaviour within and outside school	Multi-variate techniques using panel data	
			<b>Jenny O’Neill</b>	<b>16:30</b>
			The role of the Irish Social Science Data Archive (ISSDA) in the research data lifecycle	

16:50 Conference Close

## ● THE CONTEXT – ABOUT *GROWING UP IN IRELAND*

***Growing Up in Ireland*** is the national longitudinal study of children. It is the most significant study of children ever to have taken place in this country and will help us to improve our understanding of all aspects of childhood and child development.

The study is following the progress of two groups of children. The first is a “Child Cohort” of 8,500 children who were first interviewed at 9 years of age. They were re-interviewed at 13 years of age and have just been re-interviewed at age 17/18 years. These young people will be interviewed again when they are 20 years old. The second is an “Infant Cohort” of 11,100 children who were recruited at 9 months of age. They (and their main caregivers) were initially interviewed at 9 months, and again at 3 years and 5 years. Their main caregiver was interviewed on a postal basis earlier this year when the child was 7/8 years old; this will be followed by an intensive face-to-face interview at age 9 years.

The main aim of the study is to paint a full picture of children and youth in Ireland and how they are developing in the current social, economic and cultural environment. This information will be used to assist in policy formation and in the provision of services, with a view to ensuring that all children living in Ireland have the best possible start in life.

***Growing Up in Ireland*** is a government study which is funded by the Department of Children & Youth Affairs, with a contribution in support of Phase 2 of ***Growing Up in Ireland*** (2015-’19) from The Atlantic Philanthropies<sup>[1]</sup>.

The Department of Children & Youth Affairs is overseeing and managing the study in conjunction with the Central Statistics Office and an inter-departmental Project Team and Steering Group. It is being implemented by a group of independent researchers led by the Economic & Social Research Institute (ESRI) and Trinity College Dublin.

## ● CONFERENCE AIMS

This is ***Growing Up in Ireland’s*** eight annual research conference and has been organised by the joint ESRI/TCD Study Team. Dr Katherine Zappone T.D., Minister for Children and Youth Affairs will launch the latest key findings from the study during the conference. With 26 papers being presented, the conference will also provide a platform for discussion on a broad range of research from both the Infant and Child Cohorts.

## ● KEYNOTE SPEAKER

Prof. Gordon Harold holds the Andrew and Virginia Rudd Chair and is a Professor of Psychology at the University of Sussex. His primary research interests focus on the role of the family as a context for understanding children's normal and abnormal psychological development, the interplay between genetic and family relationship factors and children's psychological development, the analysis of longitudinal data and working with cohort longitudinal data resources, and implementing practice and policy recommendations from research relating to family influences on child and adolescent mental health. He has held academic positions in Leicester, London and New Zealand and has also acted as a consultant and advisor to several government departments in the UK and internationally.

---

[1] About The Atlantic Philanthropies: The Atlantic Philanthropies are dedicated to bringing about lasting changes in the lives of disadvantaged and vulnerable people. Atlantic is a limited life foundation that will complete grant making in 2016. To learn more, please visit: [www.atlanticphilanthropies.org](http://www.atlanticphilanthropies.org).